

# Study of Ocean-Tropical Cyclone interactions with multisensor observations

## Parametric wind

Chavas is a merged profile of 2 solutions based on absolute angular momentum:  
-inner ascending (ER11),  
with key term  $Ck/Cd$   
-outer descending (E04), key term  $\frac{f \times r_0}{W_{cool}/Cd}$

## Wave Model

Kudry&al wave model is a fetch and duration limited model (based on Hasselman growth wave equation) leading to self-similar laws including inverse wave age.

## ABSTRACT

*Moving tropical cyclones (TCs) are extreme atmospheric phenomena that powerfully impact the ocean. Indeed, TCs are intense sources of surface stress and stress curl generating a variety of responses : surface waves, internal currents and turbulence in the upper layer that causes vertical mixing and enhances thermocline erosion often leading to large sea surface temperature (SST) changes. There is also a measurable barotropic response with an associated trough in sea surface height (SSH). Taking advantages of multi-sensor observations, this study aims to help infer the TC intensity and life-cycle evolution. The method is based on simplified analytical models describing asymmetrical sea states, SST and SSH anomalies. First, a new parametric wind stress model can then be derived. Our approach underlines the better capacity of an outer radius forced model to reproduce the global wind forcing profile, compared to previous Rmax-based parametric models. Secondly, a work based on an altimetry dataset and a simplified analytical wave model gives an interesting way to validate wind profile. In the meantime, it will be useful for collecting necessary sea state and SSH parameters.*

Clément Combet<sup>1</sup>; Yves Quilfen<sup>1</sup>; Bertrand Chapron<sup>1</sup>; Alexis Mouche<sup>1</sup>

<sup>1</sup> Laboratoire d'Océanographie Physique et Spatiale (LOPS), IFREMER, Brest, France  
With support of TOSCA/CNES

## Database

### Satellite:

-Ascat-A (KNMI)  
-SMOS (LOPS)  
-AMSR2 (Solab)  
-Sentinel 1-A (ESA-LOPS)  
-Altimeter base: ERS-2, Envisat, Jason-1, Jason-2, Cryosat2, Saral

### Model:

-Forecast ECMWF  
-Reanalysis CFSR  
-Blended wind  
-Analysis HWind

## 1. Outer size structure

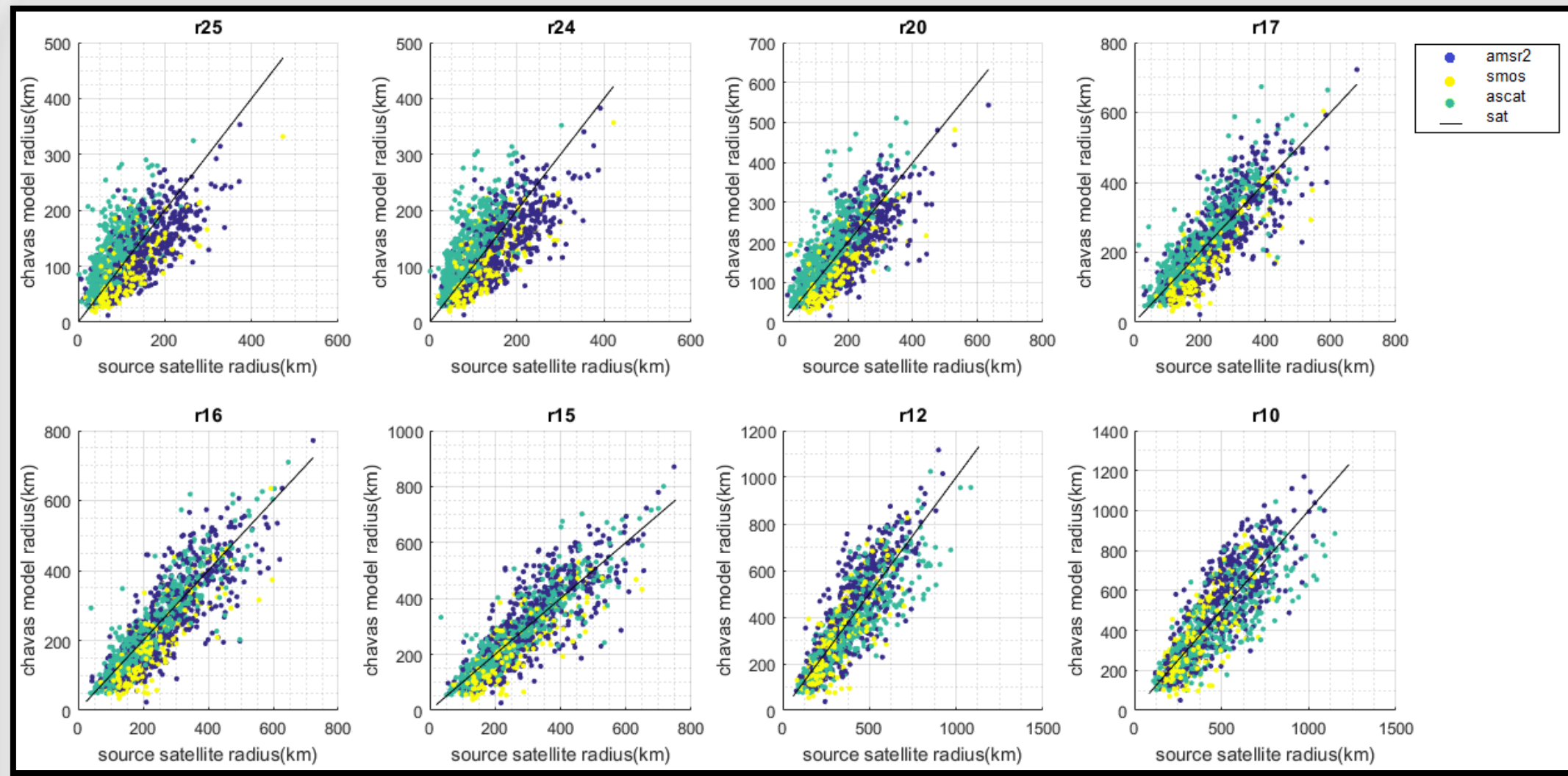


Figure 1: Scatterplot comparison of Chavas Model forced by r15 m.s-1 of ECMWF with satellite observations.

The shown results are obtained by forcing the model with the r15 m.s-1, which is assumed to bring a better transition between the high wind structure and the outer regions.

This dataset of 600 snapshots comes from smosstorm project, covering 2010-2015 cases of Ascat-A, SMOS and AMSR2.

The model seems to perform well for the outer radius profile, with global correlation of **R=85%** and a weak normalised bias less than 2%.

## 0. Multiplatform Satellite TC comparison

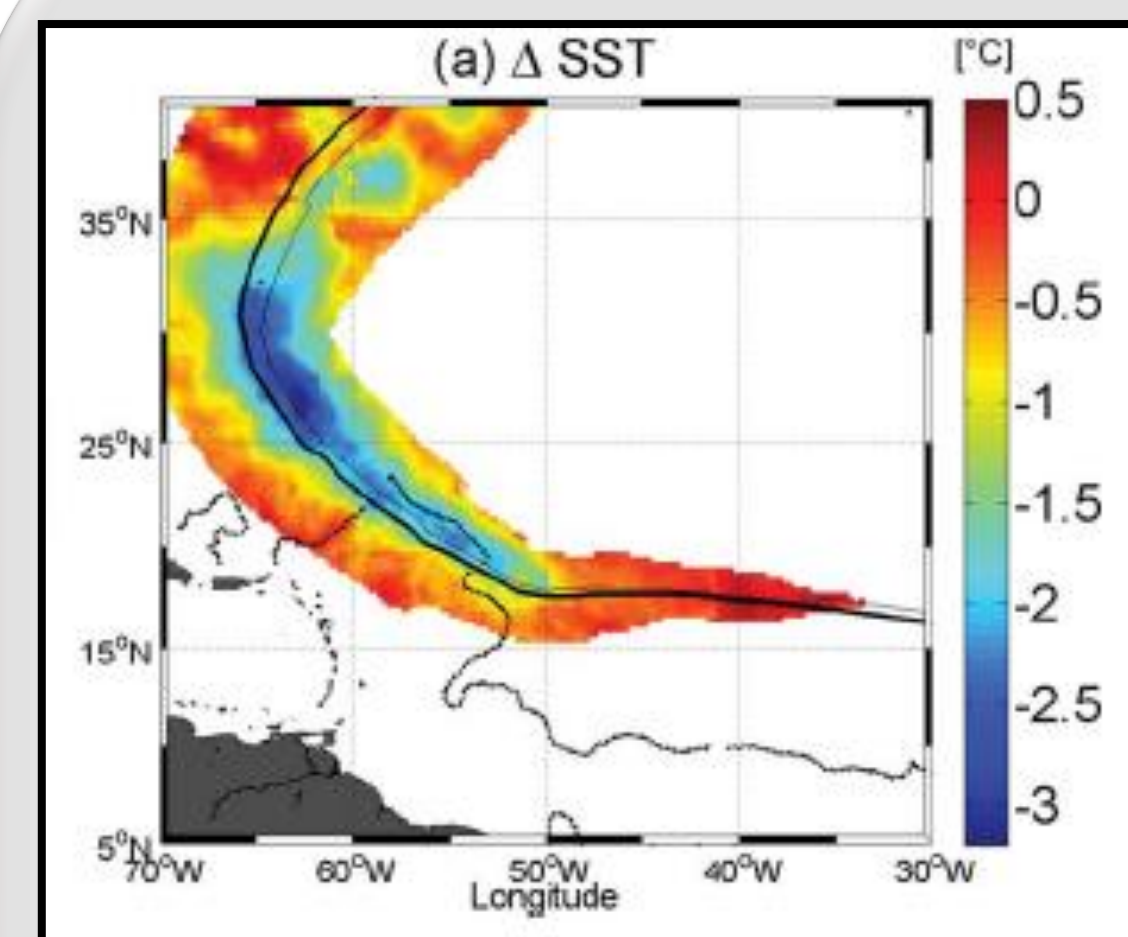


Figure 0: Example of SST anomalies during IGOR 2010

For this purpose, a multiplatform satellite comparison was released to validate the model, according to the strenght of the different used devices:

1. Combination of scatterometers and radiometers (Outer radius and size comparison).
2. SAR sentinel-1A comparison (Inner core and asymmetries).
3. Altimetry dataset: (two goals) : - Sea states and SSH - Validate the Wind gradient

This parametrization is a necessary step for our upper ocean response study.

## 2. High wind structure in Irma & José

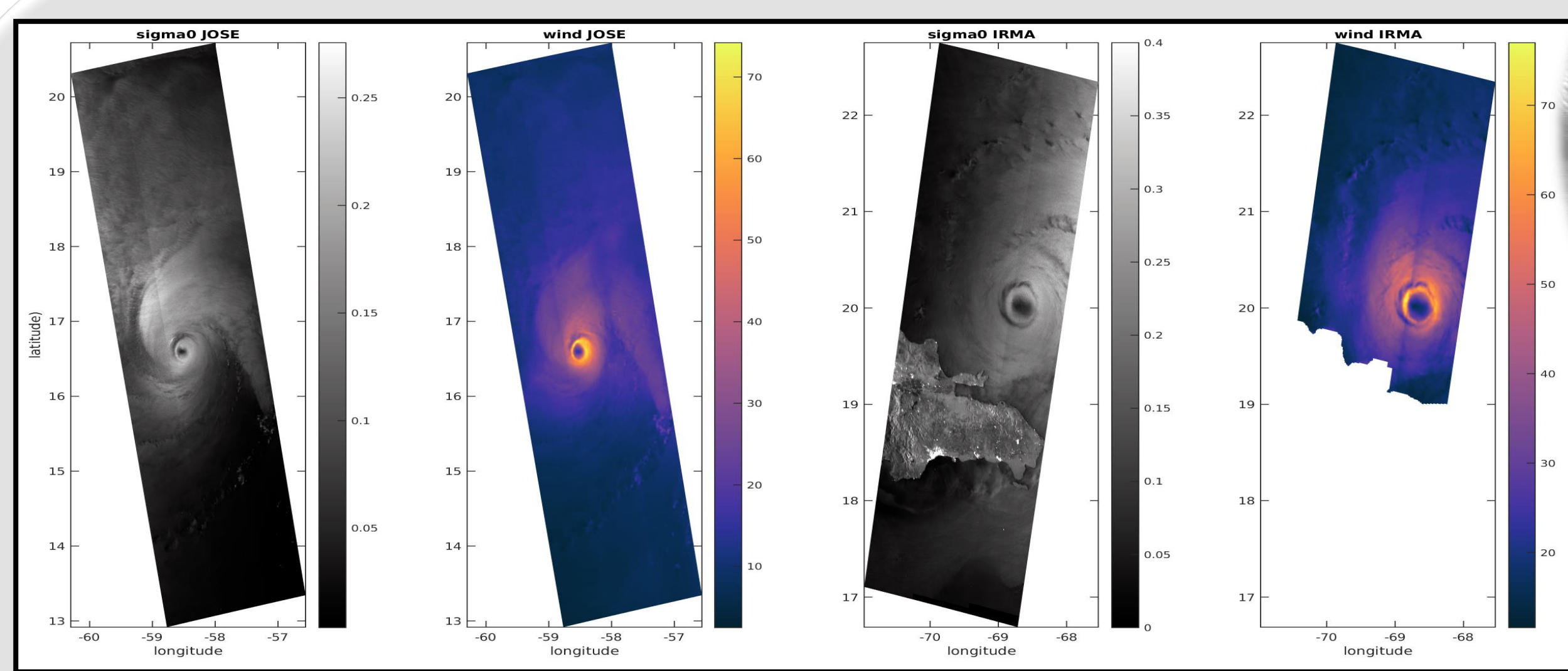


Figure 2a: Snapshot Example of wind field of SAR SHOC campaign with LOPS's GMF

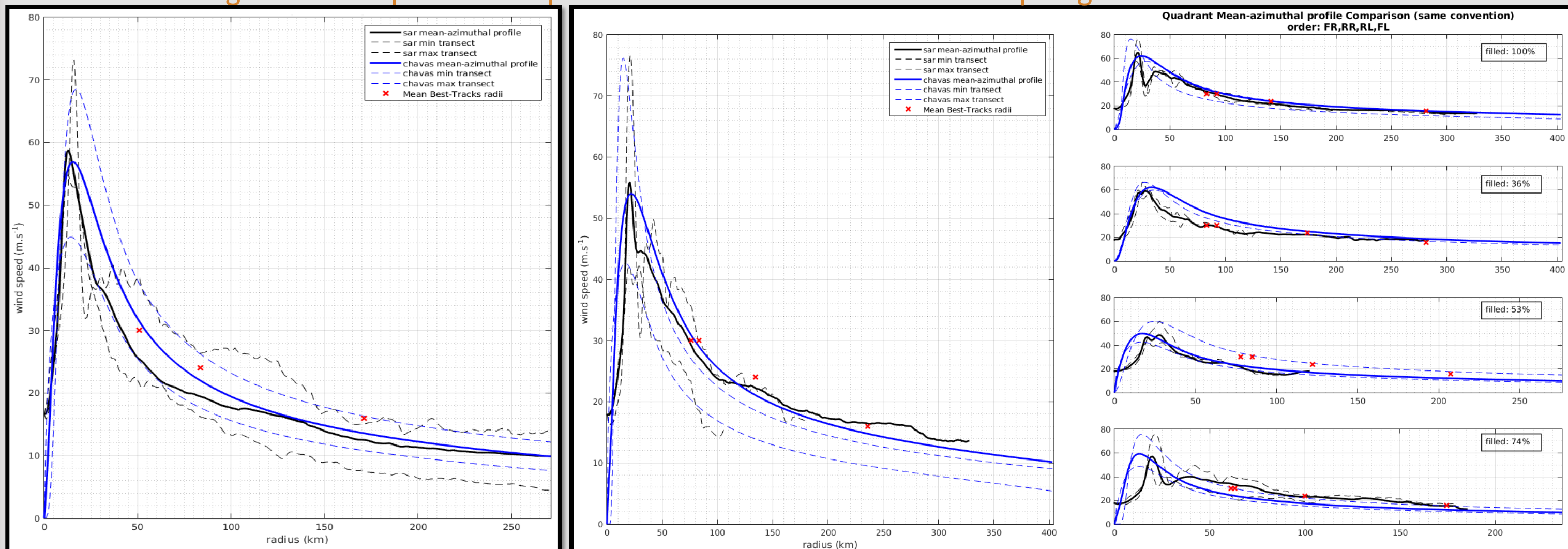


Figure 2b : Mean-azimuthal profile JOSE 08/09/2017-22h00 (cat 5)

Figure 2c: Left: Mean-azimuthal profile IRMA 07/09/2017-10h30 (cat 5). Right: Mean quadrant profile.

The SHOC campaign of ESA provides us with 17 TC cases during 2016 & 2017 seasons. The **high resolution** and the **crosspolarization** of SAR sentinel 1A allow us to make a complete comparison of the profiles. All cases were compared as a mean azimuthal profile (2b & 2c left) and as mean-quadrant point view, in order to check the asymmetry given by the model and the complete 2D wind field. The model performs well from the Rmax to the outer region for Tropical cyclone cases, as the Vmax asymmetry is well represented (2c right). However Rmax position is in most cases underestimated (fig2d). Besides TS cases are suffering from larger errors. Further study will try to correct the Rmax region. These results underline the **capability** of the new cross-polarized SAR algorithms to give **unprecedented estimate of the high wind patterns** in such powerful TCs.

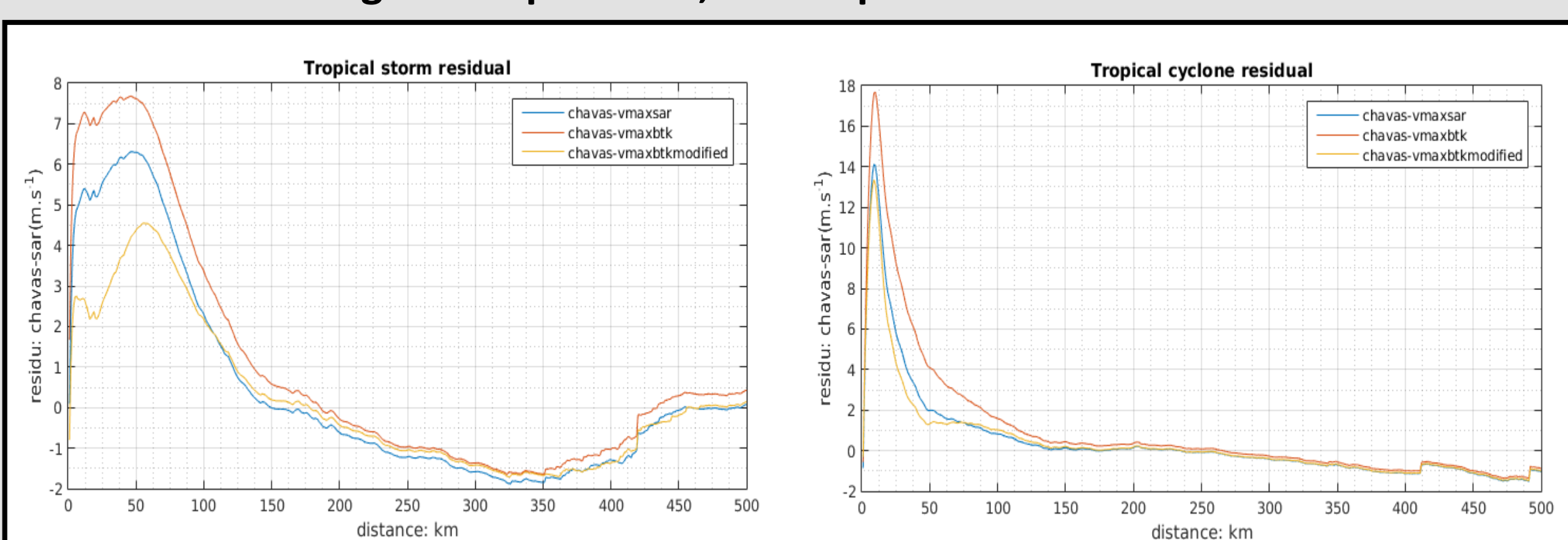


Figure 2d: General Residual, left: Tropical storms cases, right: Tropical Cyclone (Colours = different methods).

## 3. Altimetry: Wind and Hs profile

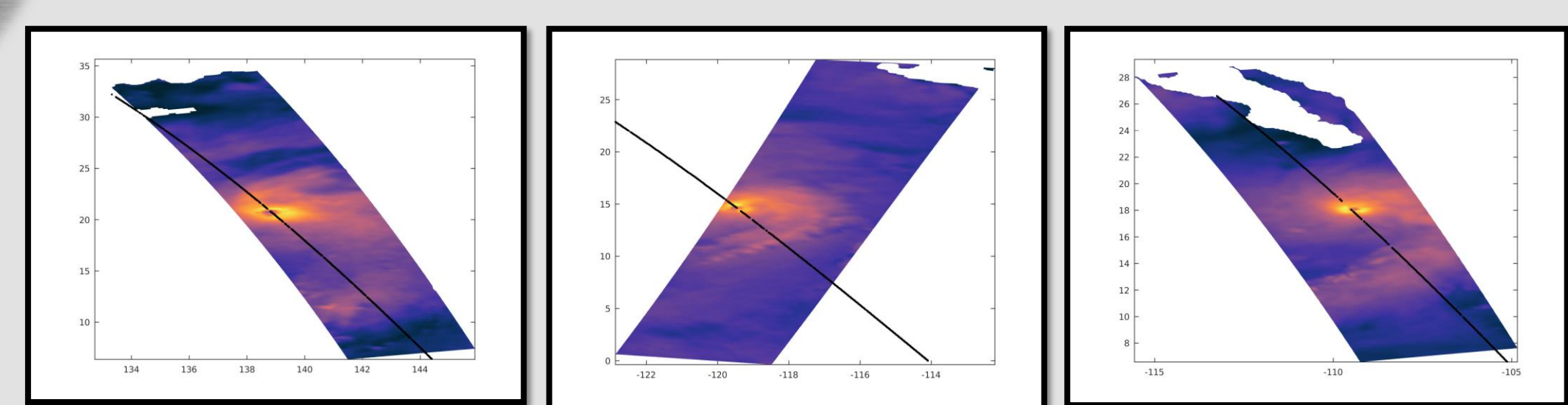


Figure 3a: Snapshots of colocated Altimetry cases

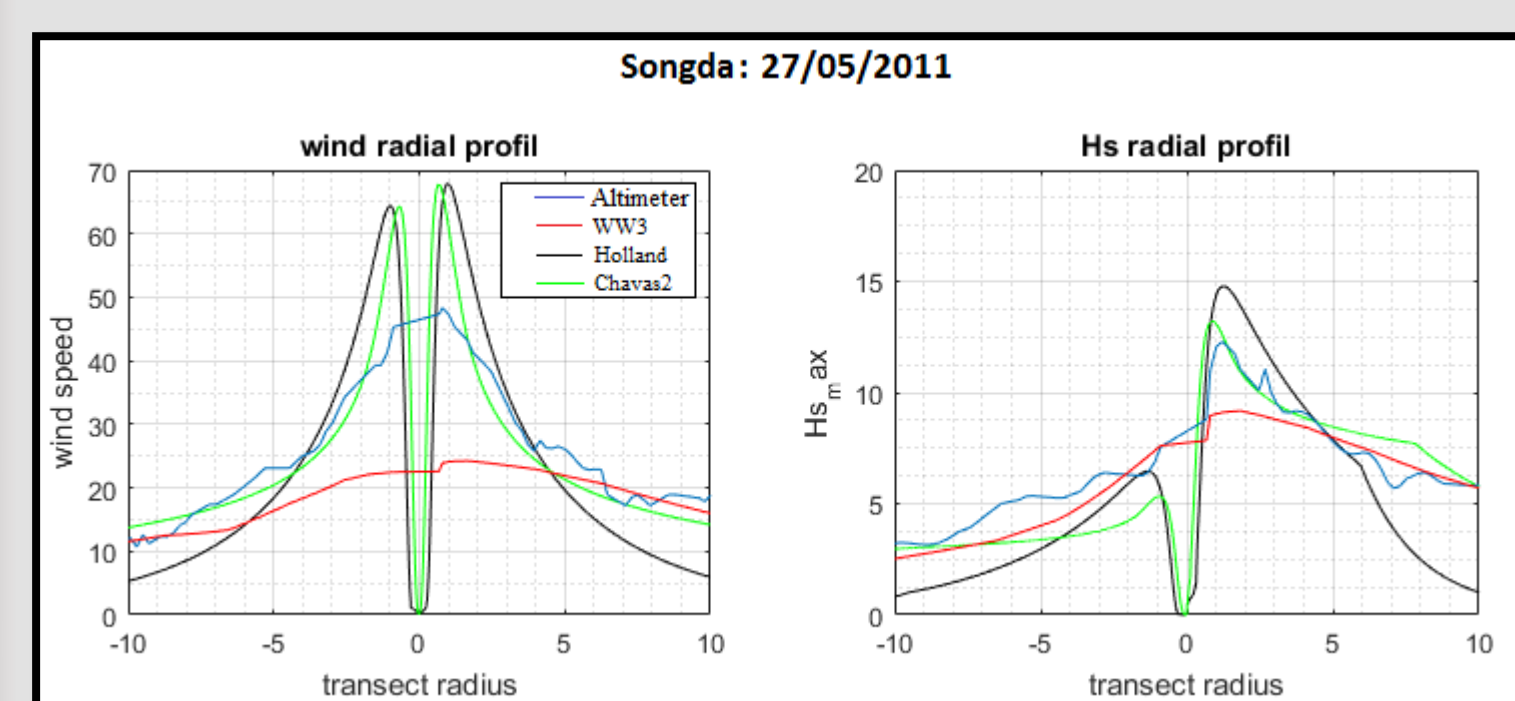


Figure 3b: Songda transect profile

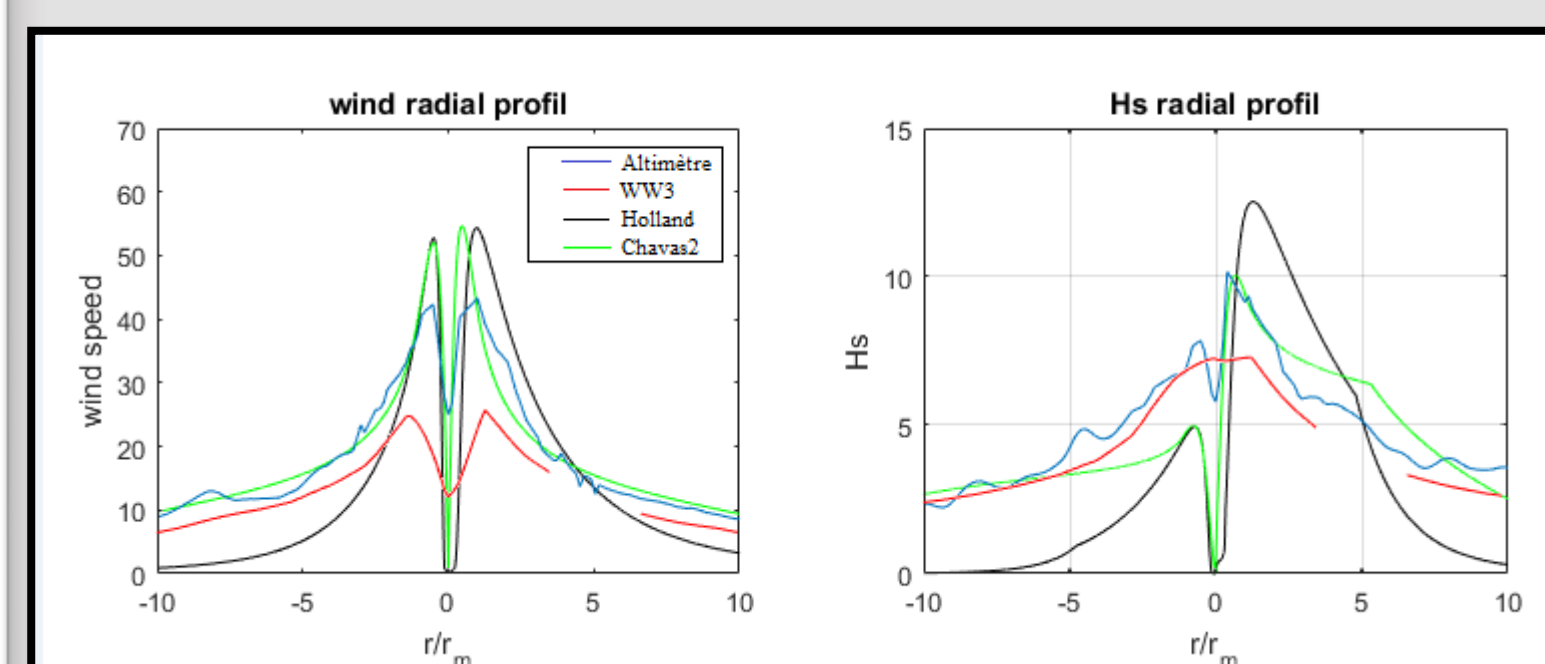


Figure 3c: Kilo transect profile

The last plot enhances the capacity of the Analytical waves model to estimate the Hs of the main quadrants. However some errors are shown for the rear left quadrant for slow TC motion, duration limited conditions are not as well verified.

From the different colocated cases (fig3a), we extract the transects of TC wind field and put them as the forcing in the Kudry& al model. This model gives us an estimation of Hs profile along the transect, under some conditions (Only transect from Front-right to Rear left, according to storm motion). For all cases we make comparisons of wind and Hs transects between model and altimetry dataset. This approach has two main interests:

- Validate wind model with altimetry wind profile, but also with Hs one which relies strongly on sustained wind (id wind gradient).
- Estimation of sea state information along the main observed asymmetries axis.

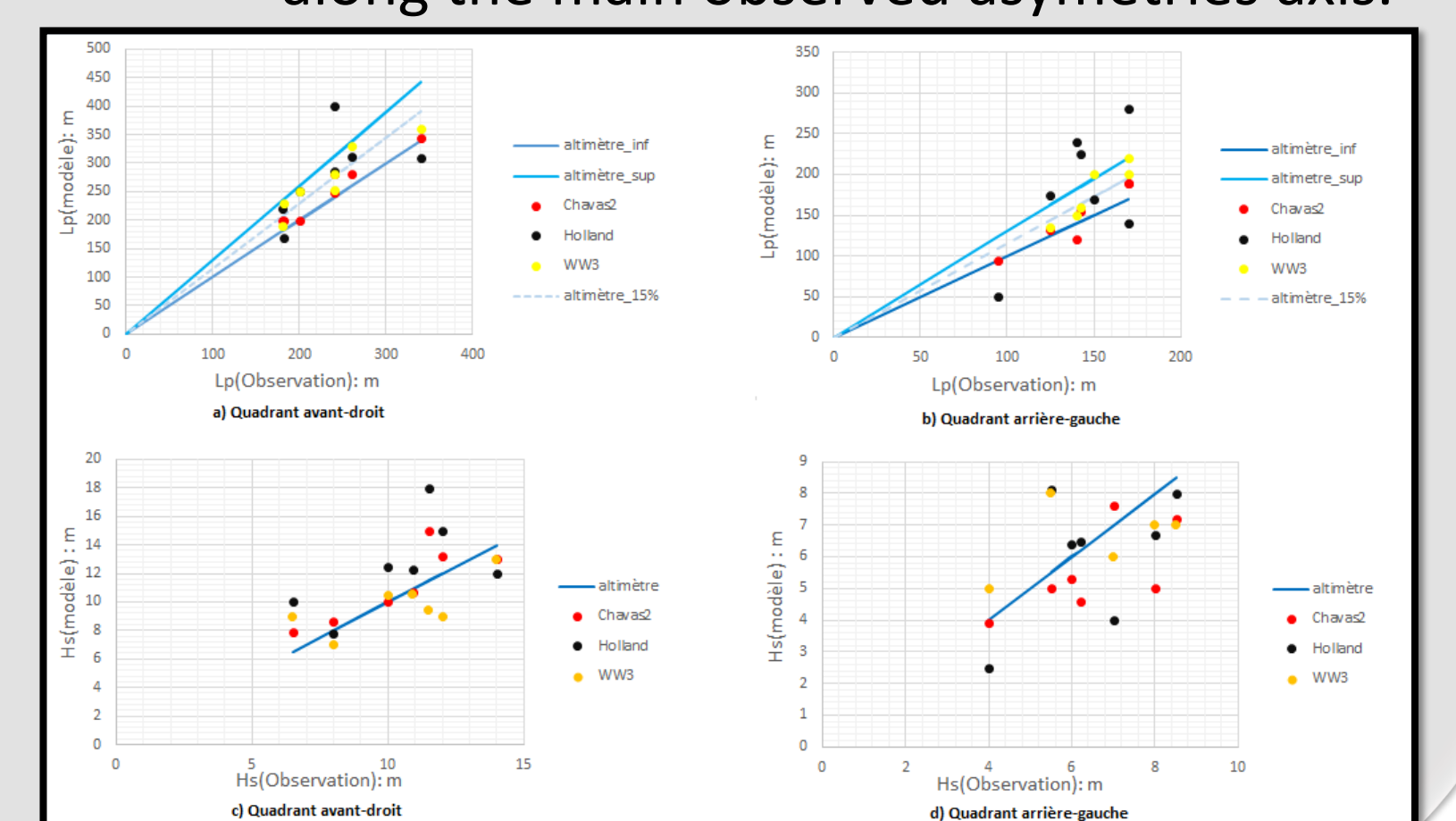


Figure 3d: Hs and Lp scatterplot

## Reference & Acknowledgement

« Acknowledgement are made to data providers which logos appear down »

Badulin (2014). A physical model of sea wave period from altimeter data.  
Chavas & Ling (2016). A model for the complete Radial Cyclone Size Revisited.  
Structure of the Tropical Cyclone Wind Field. Part II: Wind field Variability  
Chavas & al (2016). Observed Tropical

Knaff & al (2013). Upper Oceanic Energy Response to Tropical Cyclone Passage.

Knaff & al (2016). Using Routinely Available Information to Estimate Tropical Cyclone Wind Structure.

Klotz & al (2017). Examination of Surface Wind Asymmetries in Tropical Cyclones. Part I: General Structure and Wind Shear Impacts.

Kudryavtsev & al (2015). A simplified wave enhancement criterion for moving extreme winds.

Li (2017). Hurricane Monitoring With Spaceborne Synthetic Aperture Radar,

Mei & al (2013). Sea Surface height evidence for long-term warming effects of tropical cyclones on the ocean.

Mouche & al (2017). Combined Co- and Cross-Polarized SAR Measurements Under Extreme Wind Conditions.

Murakami (2014). Tropical Cyclones in reanalysis data sets.

Quilfen & al (2010). Satellite Microwave Surface Observation in TCs.

Reppucci & al (2010). Tropical Cyclone Intensity Estimated From Wide-Swath SAR Images.