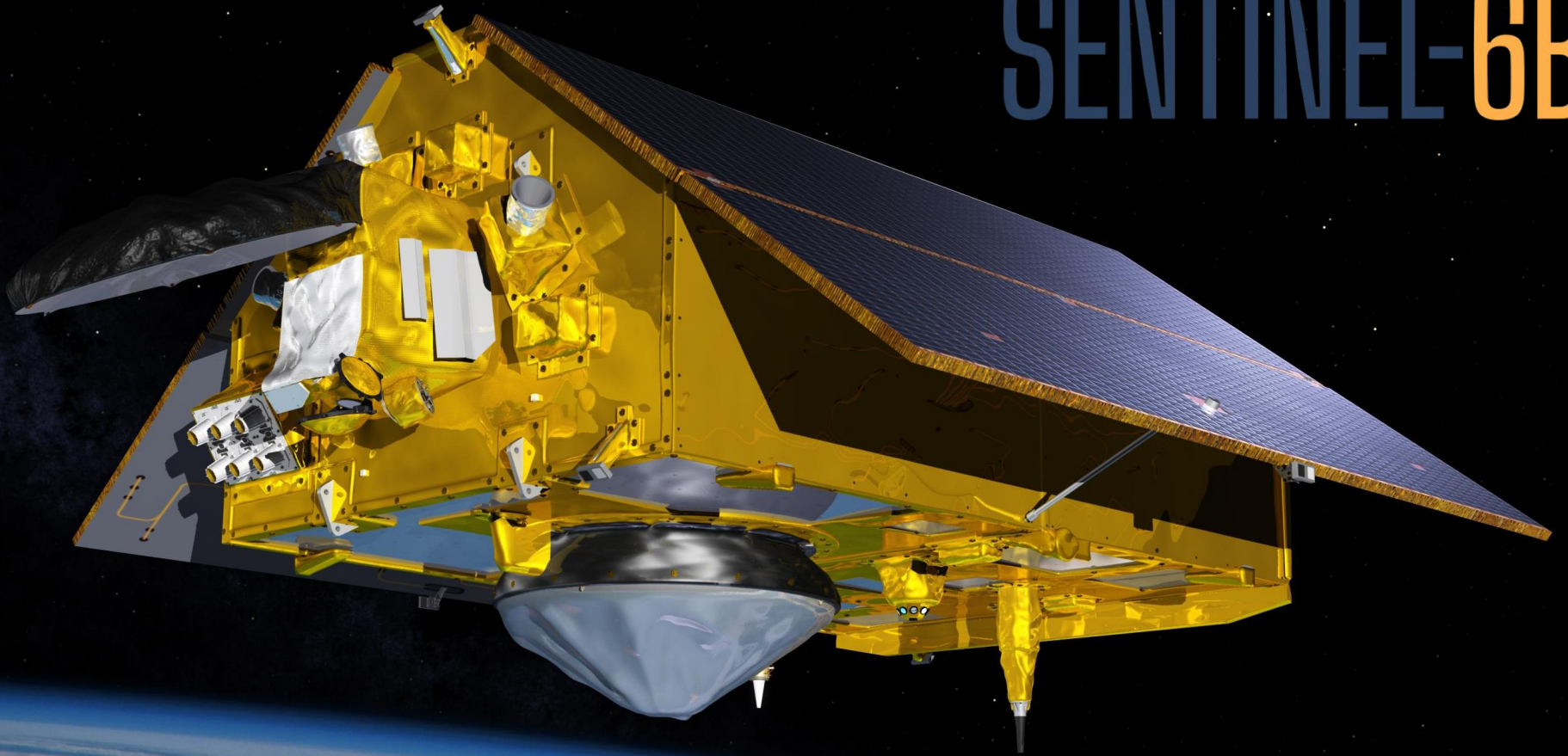




SENTINEL-6B



SENTINEL-6B



NASA • ESA • NOAA • EUMETSAT
EU • COPERNICUS

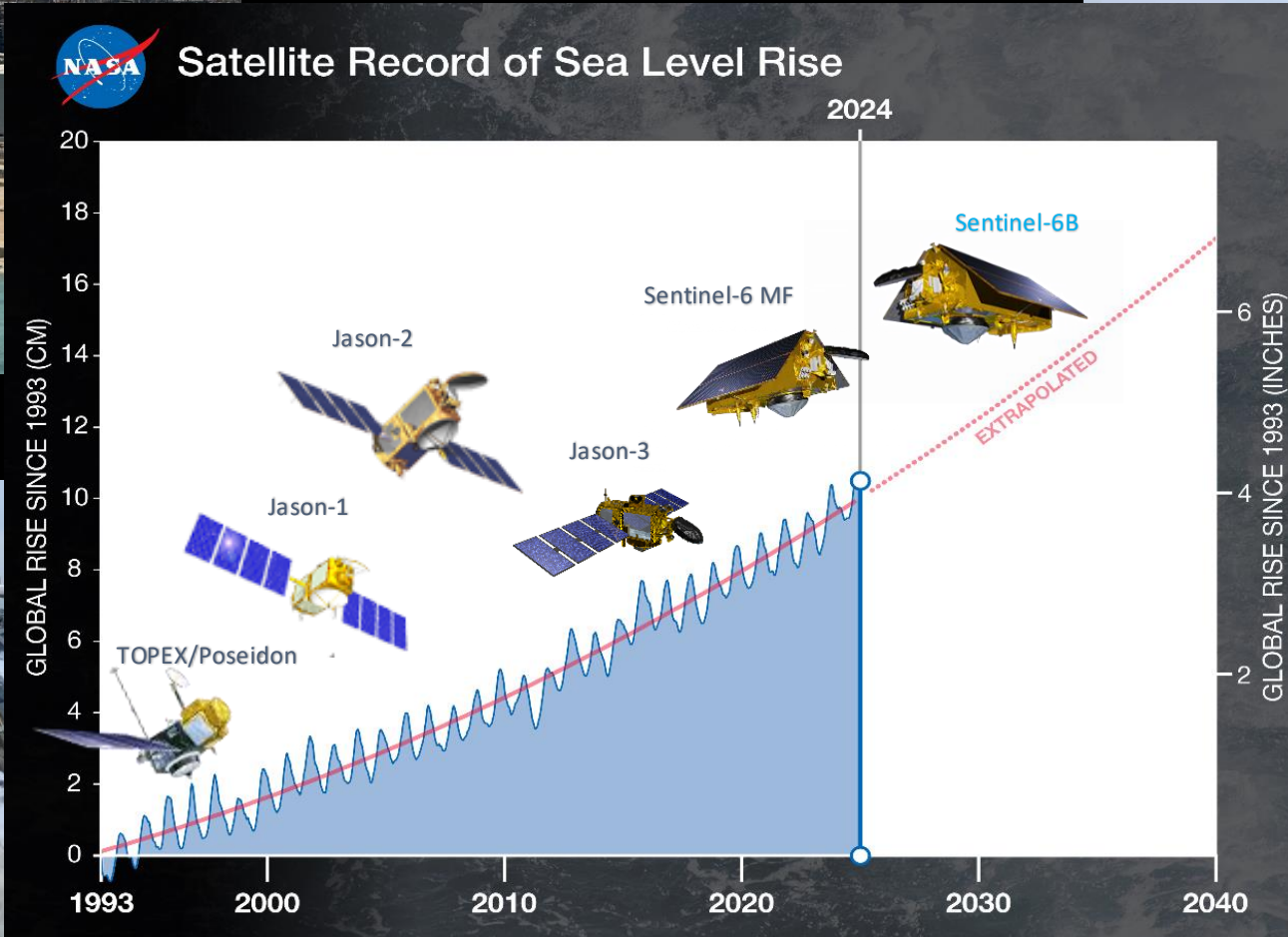
Coastal Planning



Saudi oil refinery and terminal threatened by rising seas



Train Tracks in Barcelona



Beach erosion in Rhode Island

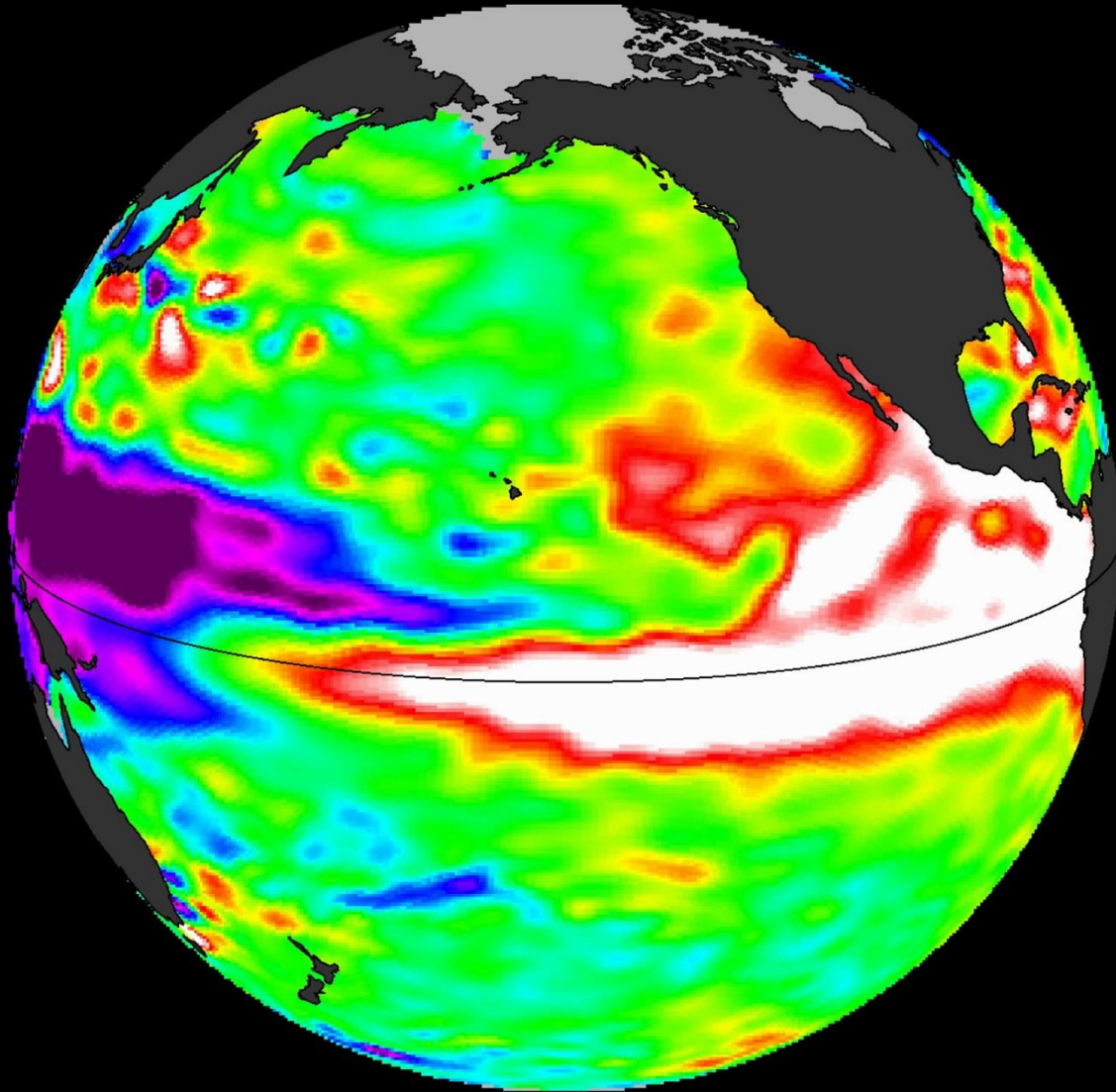


Flooding from Hurricane Sandy

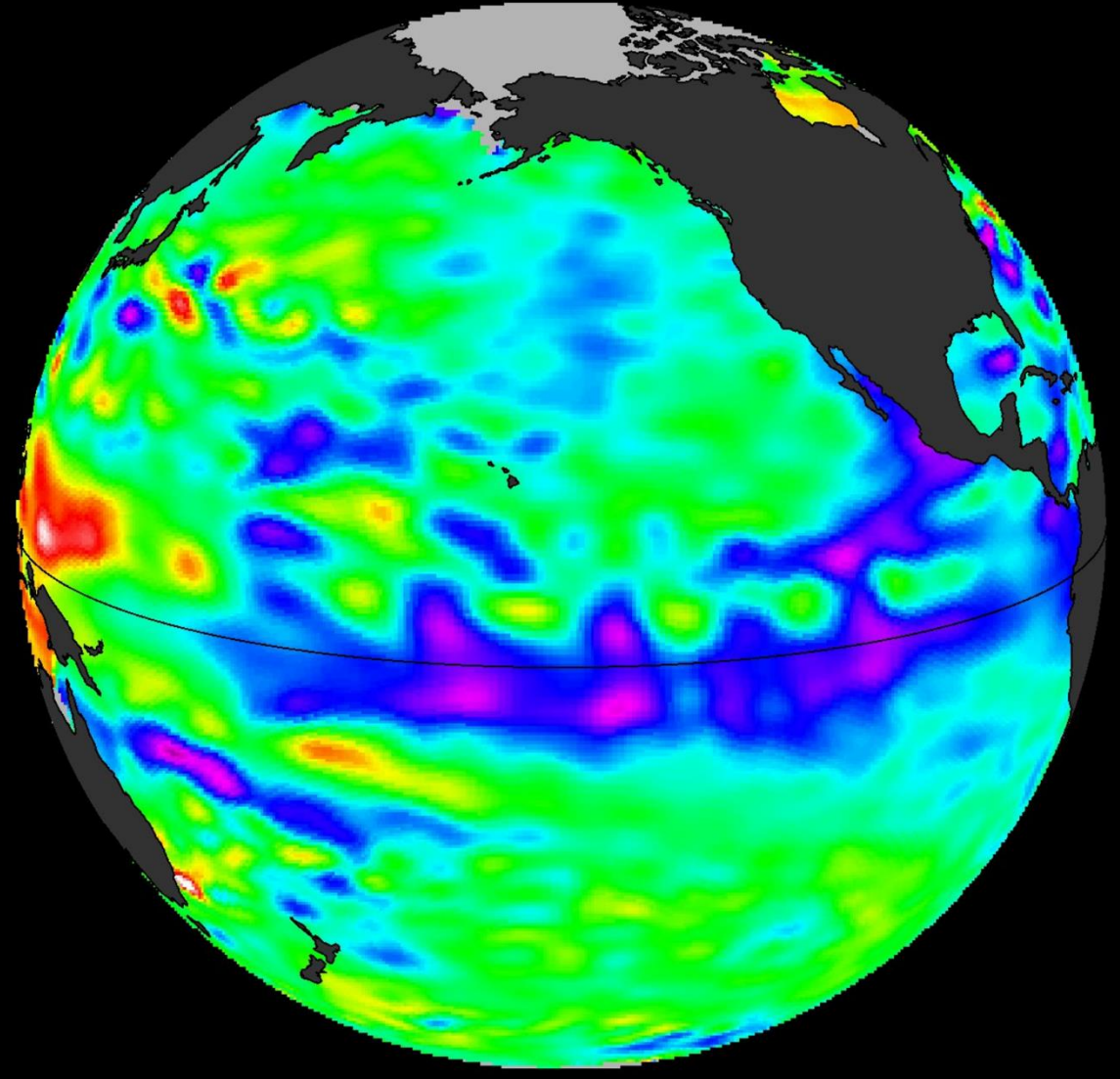
Worldwide, 200 million people live on land that will be regularly flooded or below sea level by 2100

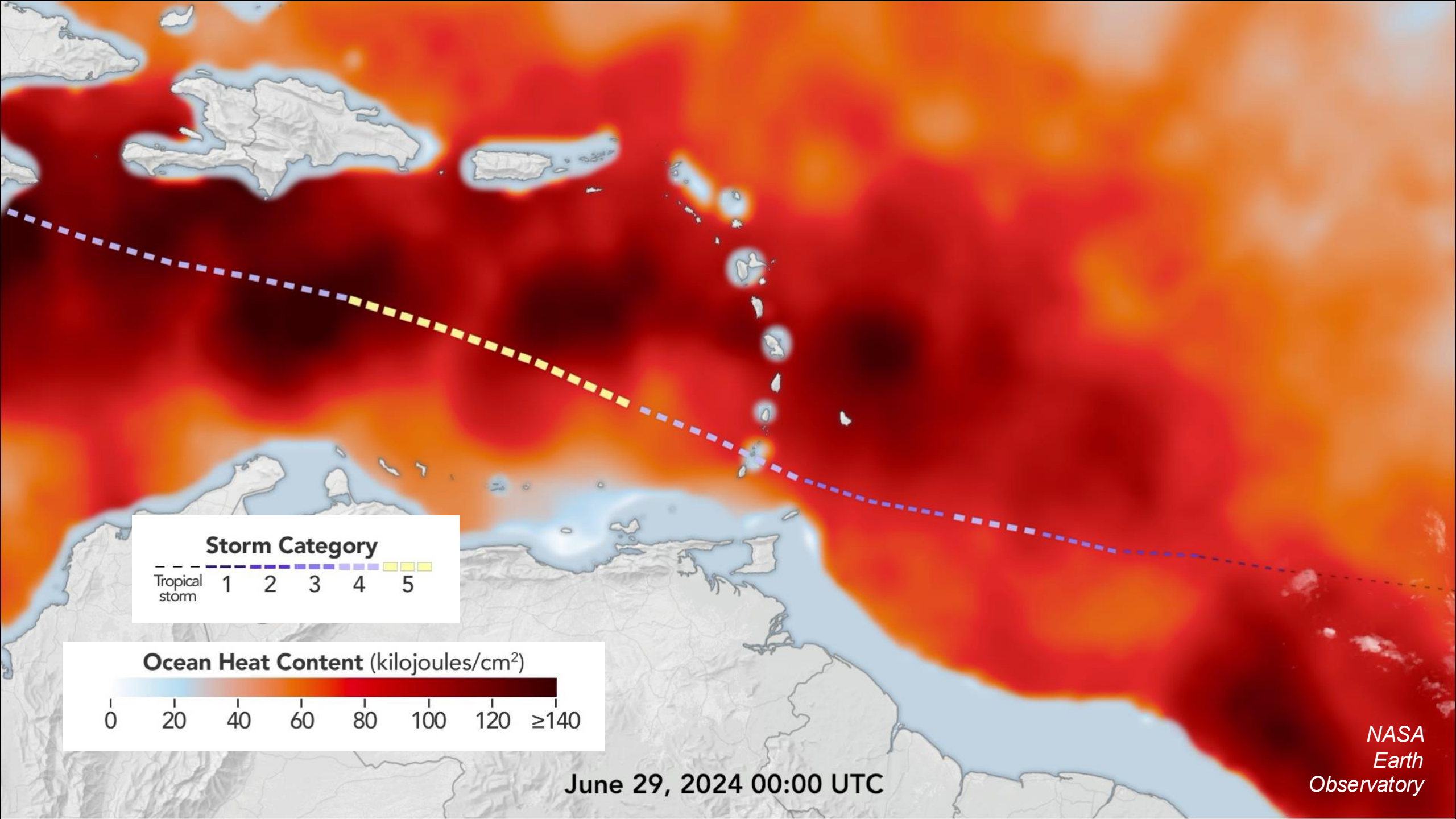
El Niño/La Niña

6 December 2015 – El Niño



2 December 2010 – La Niña





Storm Category

--- Tropical storm
1 2 3 4 5

Ocean Heat Content (kilojoules/cm²)

0 20 40 60 80 100 120 ≥140

June 29, 2024 00:00 UTC

NASA
Earth
Observatory

SENTINEL-6B



HURRICANE INTENSIFICATION FORECASTING

Altimetry data is a key ingredient for creating and measuring the upper ocean heat content. Ocean heat content is vital factor in forecasting the intensity of hurricanes as they approach the U.S. East and Gulf Coasts. Data from Sentinel-6B and other NOAA satellites are the foundation of our forecasting system.



WAVE HEIGHT MEASUREMENTS

Accurate surface wave forecasts are vital for offshore operations to protect shipping and commerce. Sentinel-6B will continue to provide important global altimeter-derived wave height data for the world's oceans in order to improve our current wave prediction systems.



NOAA Satellite and Information Service

www.nesdis.noaa.gov

