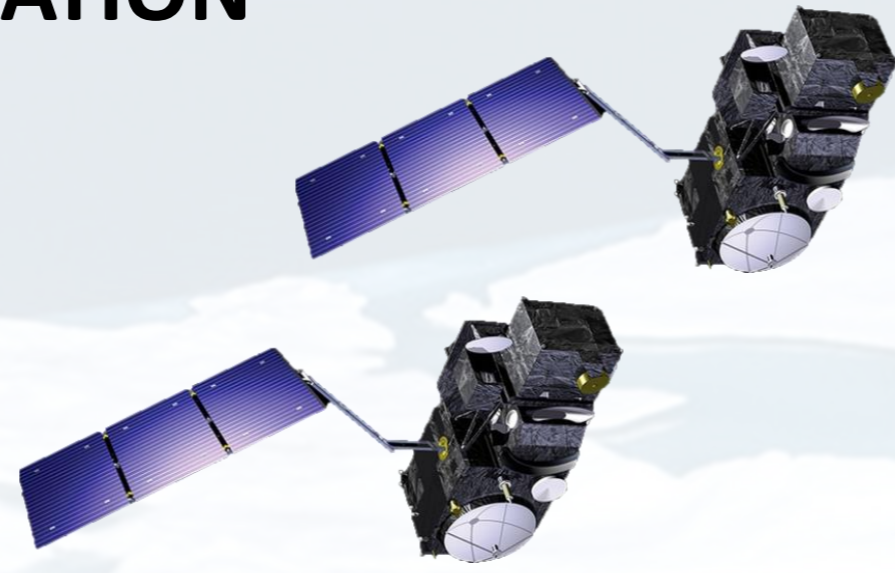


NEW SENTINEL-3 SEA ICE & LAND ICE L2 THEMATIC PRODUCTS

FULL MISSION REPROCESSING (FMR) WITH BASELINE COLLECTION 005 (BC005)

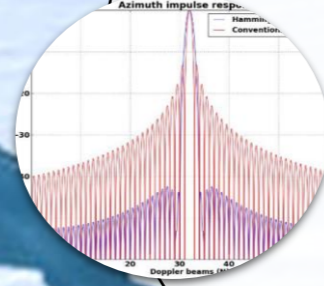
MISSION INFORMATION

TWO SATELLITES MISSION S3A & S3B
SAR ALTIMETRY Ku & C BAND
ALTITUDE 815 km
INCLINATION 98.6 deg
GROUND TRACK DEVIATION 1km
REVISIT TIME 27 days
DATA SINCE 2016 (S3A) 2018 (S3B)

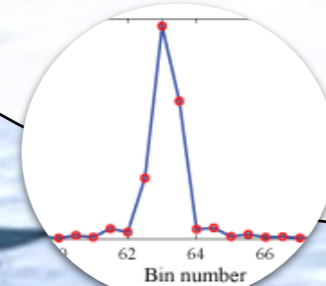


DEDICATED MASK FOR SEA ICE AREAS

SEA ICE



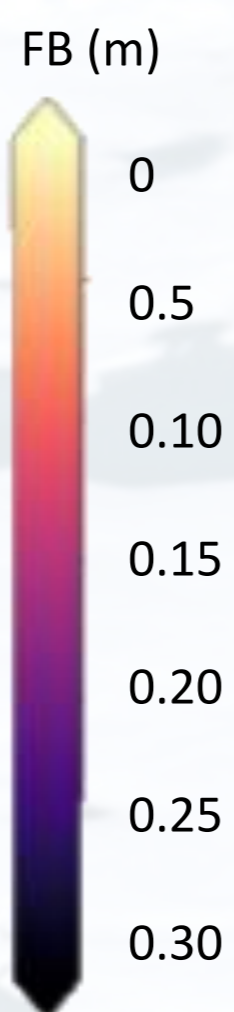
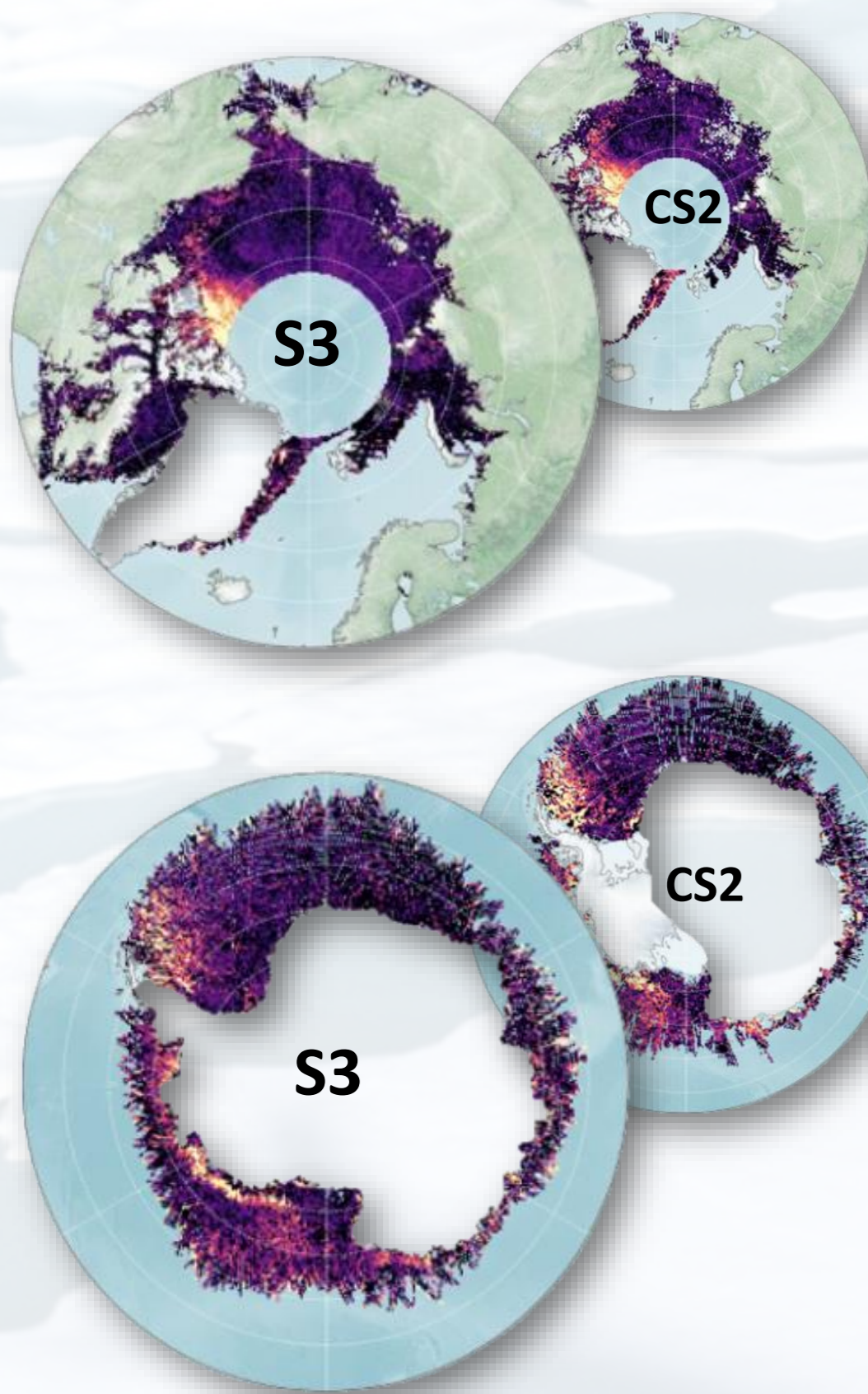
HAMMING WINDOW FILTER



ZERO-PADDING PROCESSING

WHAT'S NEW IN BC005

VALIDATION VS CRYOSAT-2 (CS2)

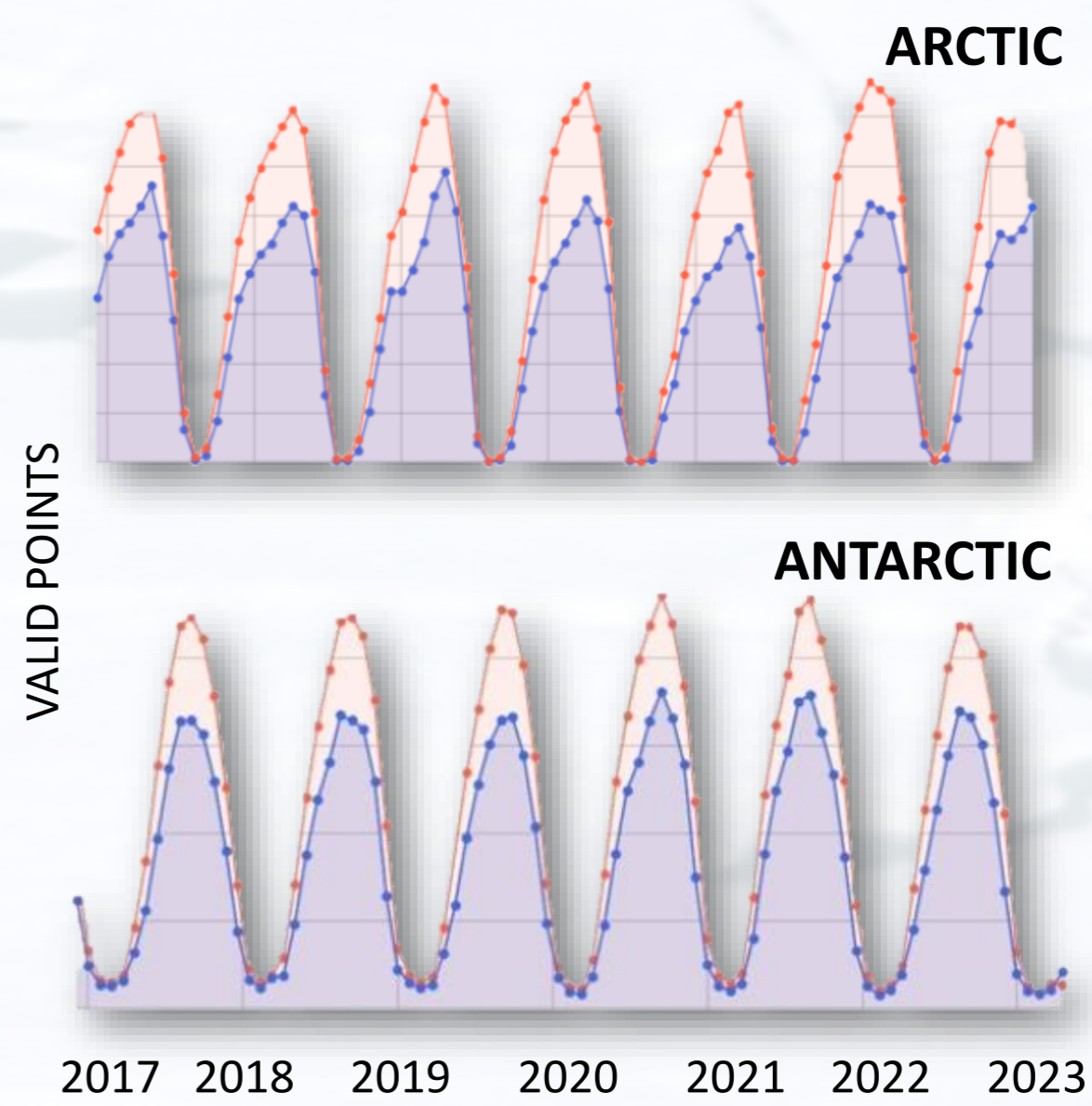


FREEBOARD (FB) AGREEMENT WRT CS2 LARGELY IMPROVED UP TO...

90%

IMPROVED DATA COVERAGE

S3 NEW THEMATIC PRODUCTS
S3 OLD PRODUCTS



25%

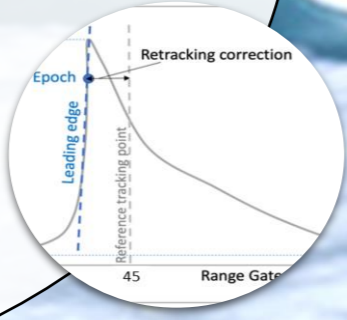
MORE FREEBOARD VALID DATA !

LAND ICE

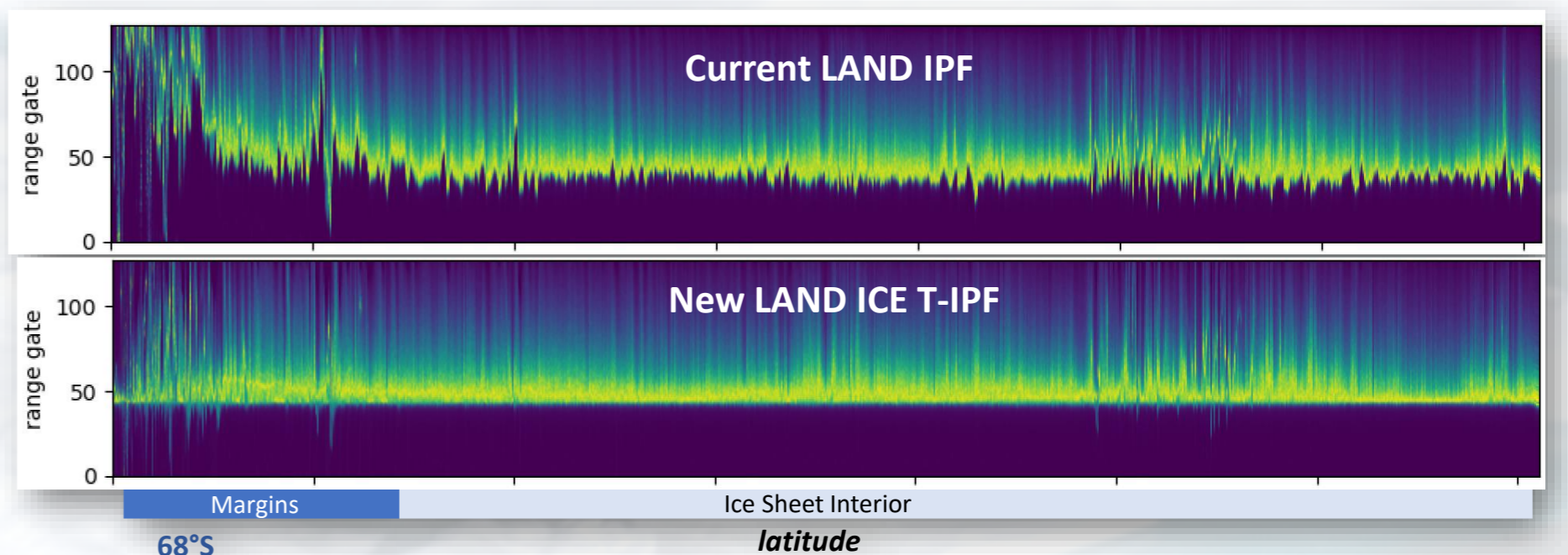
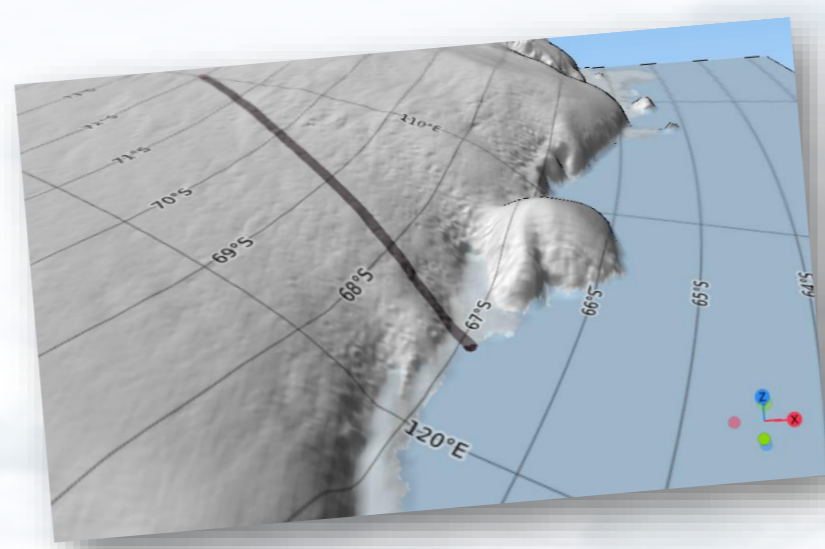
WHAT'S NEW IN BC005

DEDICATED MASK FOR LAND ICE AREAS

EXTENDED WINDOW FOR WAVEFORM PROCESSING

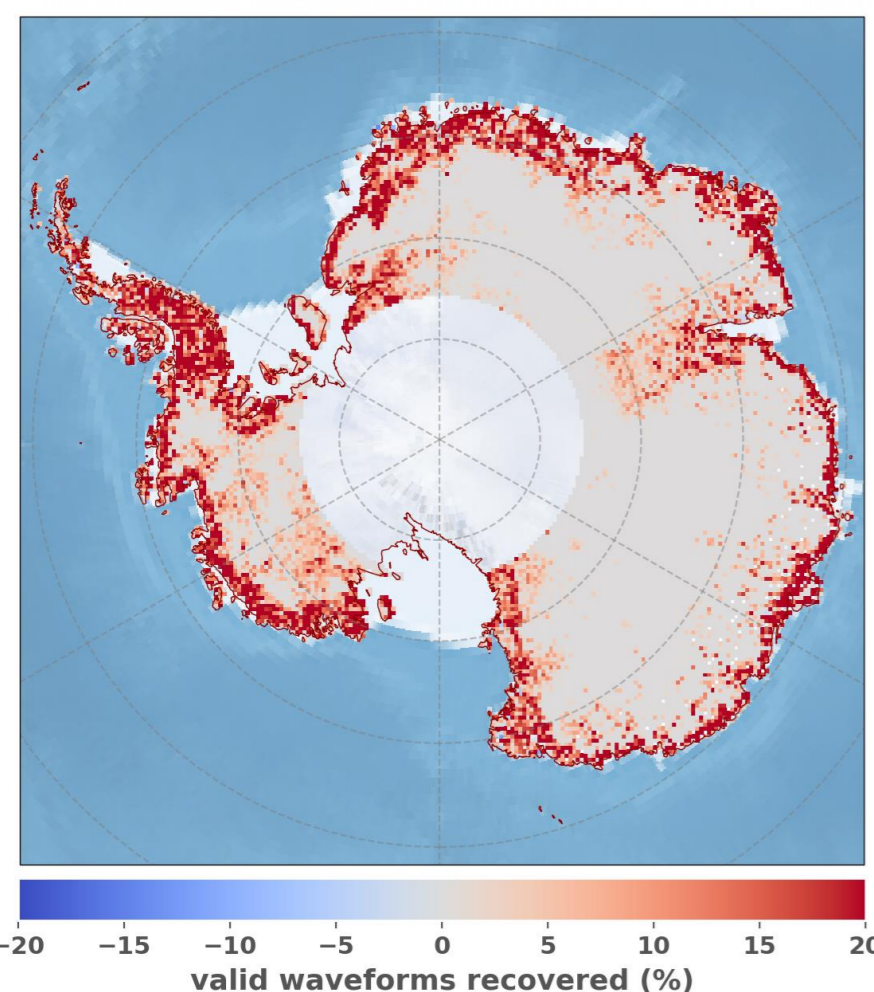


IMPROVED DELAY DOPPLER PROCESSING



S3 DATA COVERAGE SIGNIFICANTLY IMPROVED THANKS TO DELAY-DOPPLER PROCESSING WITH EXTENDED WINDOW

IMPROVED DATA COVERAGE



OVER ICE MARGINS, DATA COVERAGE IMPROVED UP TO...

25%



Filomena.Catapano@ext.esa.int
Filomena Catapano, Pierre Féménias, Jérôme Bouffard (ESA ESRI) and S3 MPC ALT team

S3 THEMATIC PRODUCTS DATA USER HANDBOOK

FREE AND OPEN DATA ACCESS

FULL MISSION REPROCESSING NEWS

