

# Outreach & data services

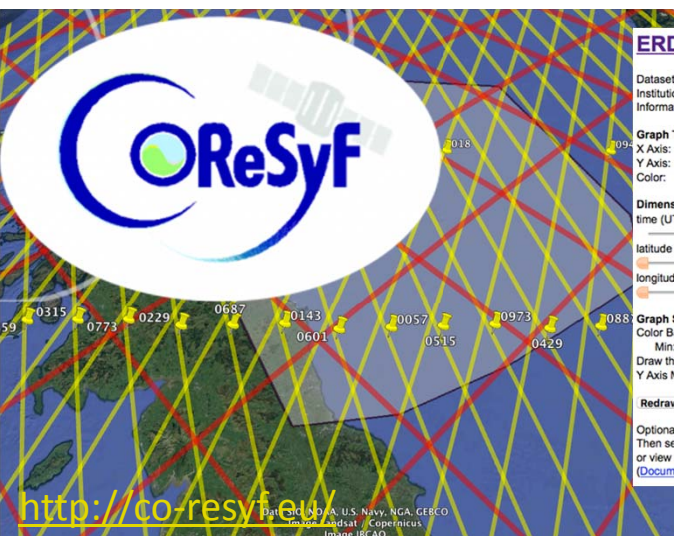
# In summary

- Data Services: 2 presentations, 5 showcases, 7 Posters
- Outreach: 3 presentations, 3 showcases, 3 Posters
- The short format of the “outreach showcases” is filling a need/gap
- About 50 attendees at the session (maybe 60 including people going in and out)
- No attendee to the round table. Find another format to discuss in for the outreach & data services session?

# Discussion

- For both outreach and data services :
  - What is missing ?
  - What new method/ways/material would you like ?
- Outreach
  - What would you consider as an incentive to outreach (more)
  - Do you find outreach has too much/too little space/visibility in OSTST?
- Data services
  - What features do you consider as a must-have for a data service (today) ?
- At the cross-road : training
  - Which content, public, frequency, modality...? (face to face vs on line, theory vs practice, material to be re-used in teachers' lectures...)
  - What would you think useful in the specific case of altimetry / ocean topography / your own field of research?
  - What kind of material are you missing for your own lectures?





## ERDDAP > griddap > Make A Graph

Dataset Title: **NOAA CoastWatch, Sea Surface Height Anomalies from Altimetry, Global, 2017-present, EXPERIMENTAL**   
 Institution: NOAA/NESDIS Center for Satellite Applications and Research (Dataset ID: nesdisSSH1day)  
 Information: Summary | License | FGDC | ISO 19115 | Metadata | Background | Data Access Form | Files

Graph Type: surface   
 X Axis: longitude   
 Y Axis: latitude   
 Color: sla

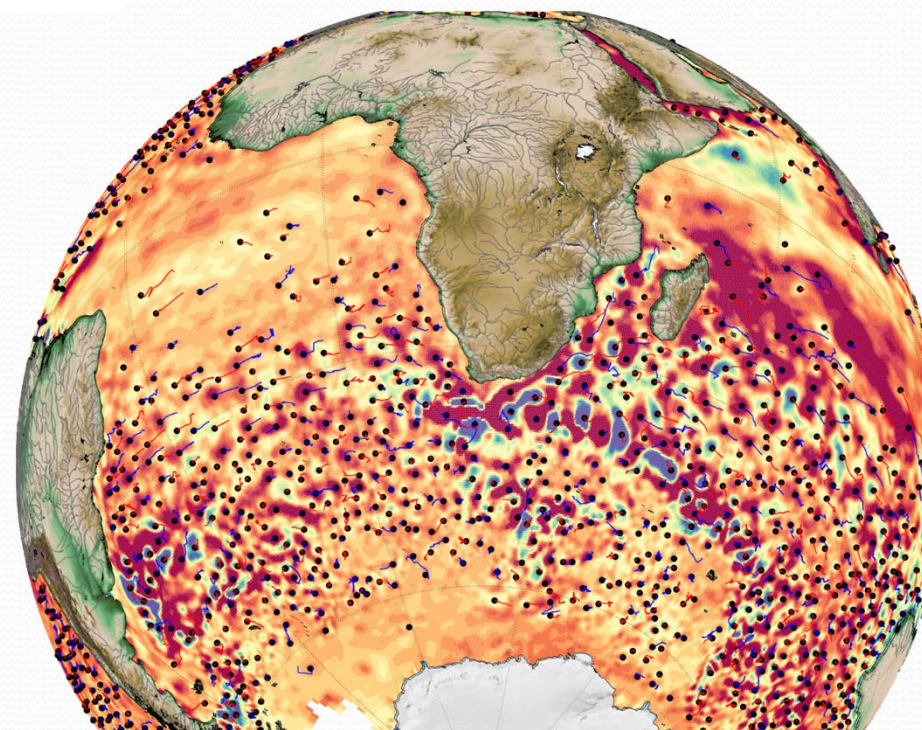
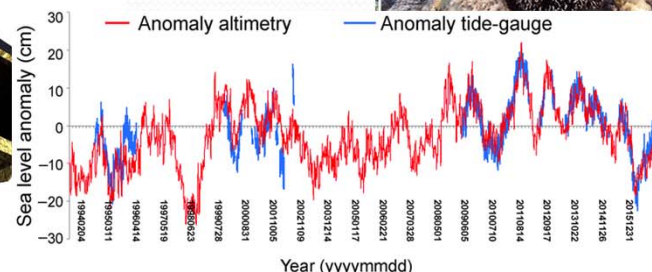
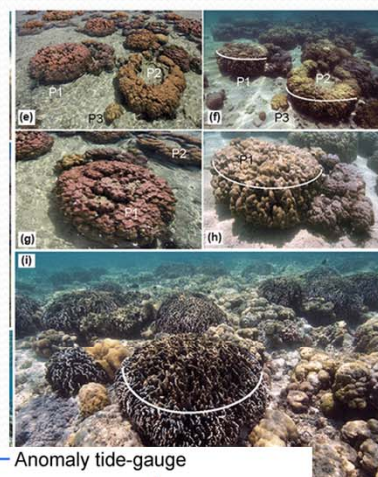
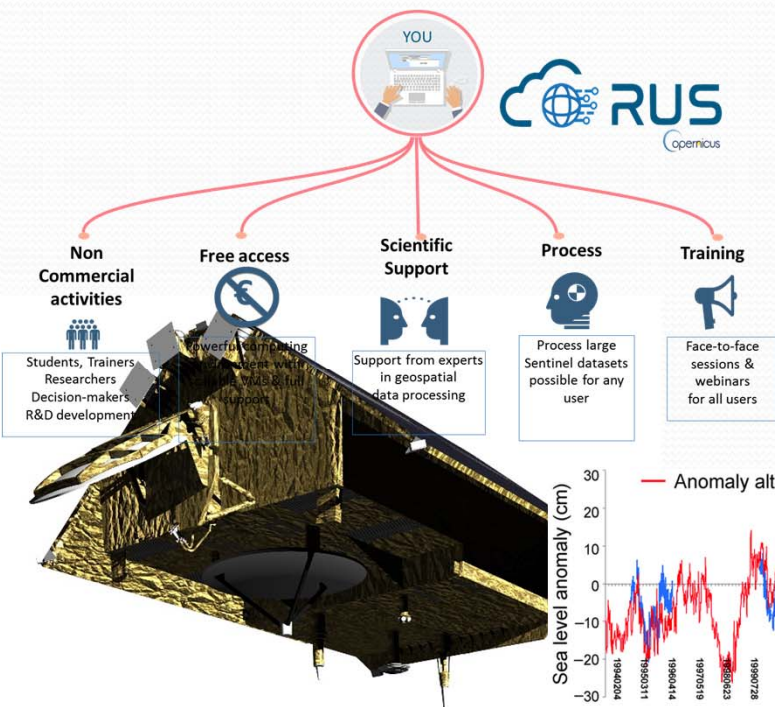
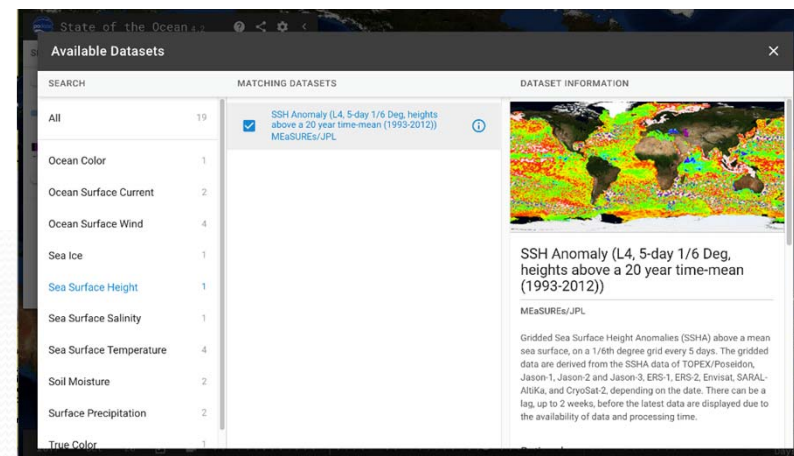
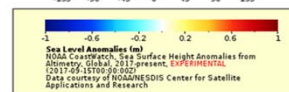
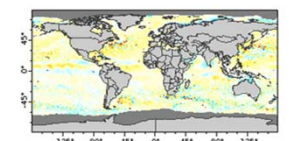
Dimensions   
 time (UTC) specify just 1 value → 2017-09-15T00:00:00Z

latitude (degrees\_north) -89.875 89.875   
 longitude (degrees\_east) -179.875 179.875

Graph Settings   
 Color Bar: BlueWhiteRed Continuity: Continuous Scale: Linear   
 Min: -1 Max: 1 N Sections: 5   
 Draw the land mask: Maximum: ascending   
 Redraw the Graph: (Please be patient. It may take a while to get the data.)

Optional:  
 Then set the File Type: .htmlTable and Download the Data or an Image   
 or view the URL: [\(http://coastwatch.pfeg.noaa.gov/erddap/griddap/nesdisSSH1day.htmlTable?sla\(2017-09-15T00:00:00Z\)\)](http://coastwatch.pfeg.noaa.gov/erddap/griddap/nesdisSSH1day.htmlTable?sla(2017-09-15T00:00:00Z)) (File Type Information) (Documentation / Bypass this form )

Click on the map to specify a new center point.   
 Zoom: Data Out 8x Out 2x Out In 2x In 8x



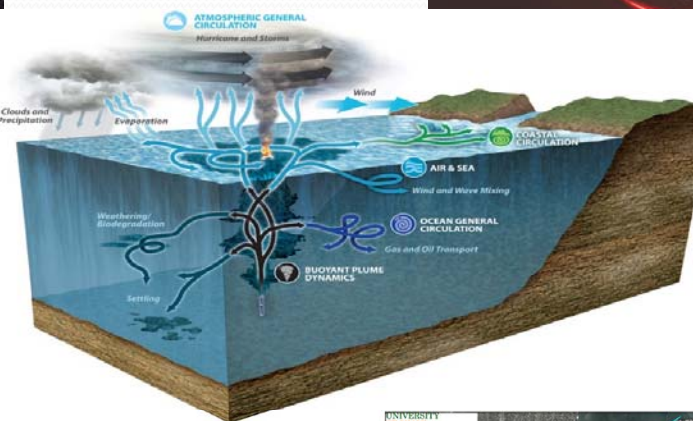
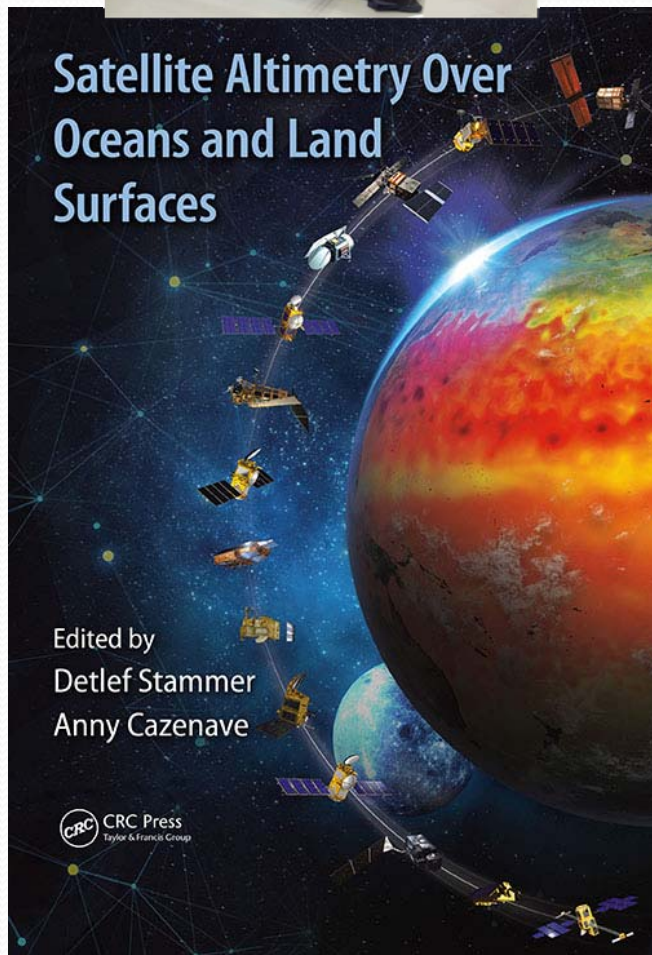
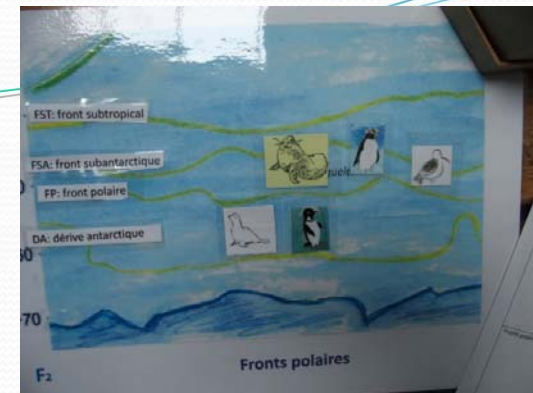
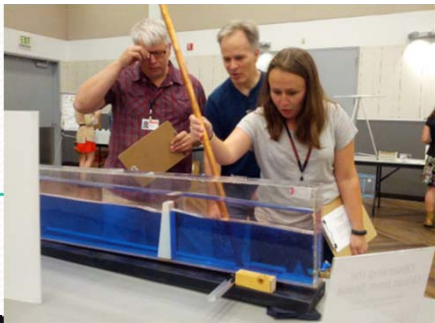
<https://www.aviso.altimetry.fr/index.php?id=3280>



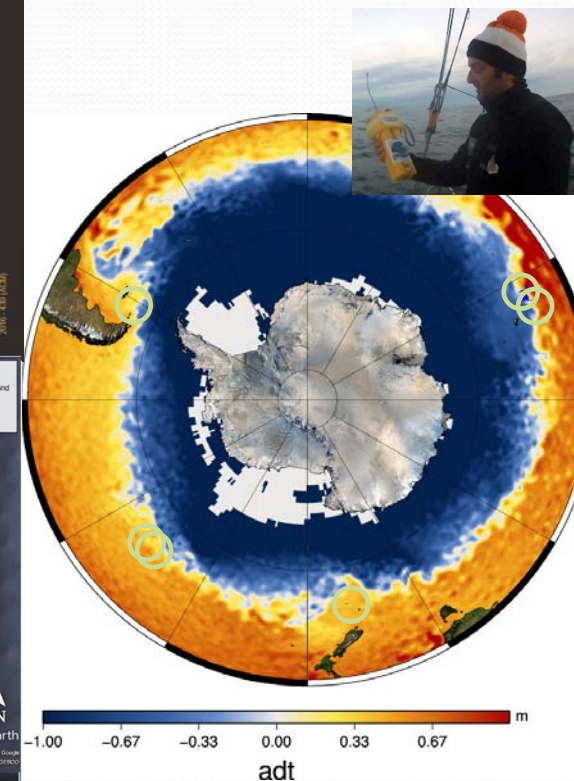
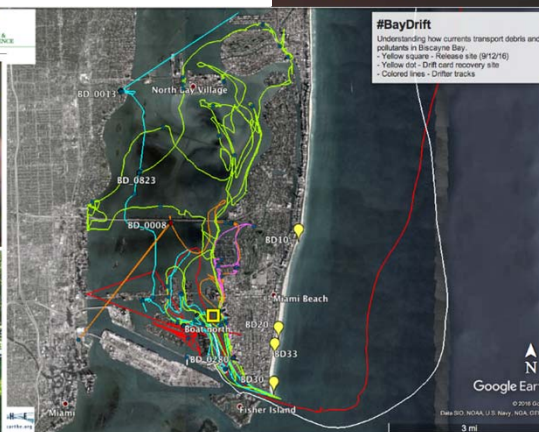
# Data services

- Some new products distributed or to be distributed (Jason-CS/Sentinel-6)
- Updated/upgraded services (online, interactive including web services) to distribute them. All centers continues on improving on their services.
- New services built, in particular in the frame of the Copernicus program in Europe
- Upgraded tools





the European-American  
and at the beginning of 2016  
environment, by taking part  
competition\*.  
by the various stakeholders in this  
which reflects your understanding  
of climate and biodiversity  
primary and secondary school classes.  
in French or English.  
for the best production for each of  
winning sites will be highlighted on  
websites and those of its partners.  
[Jason3cneseu.org](http://Jason3cneseu.org)  
2016 to 1 February 2017

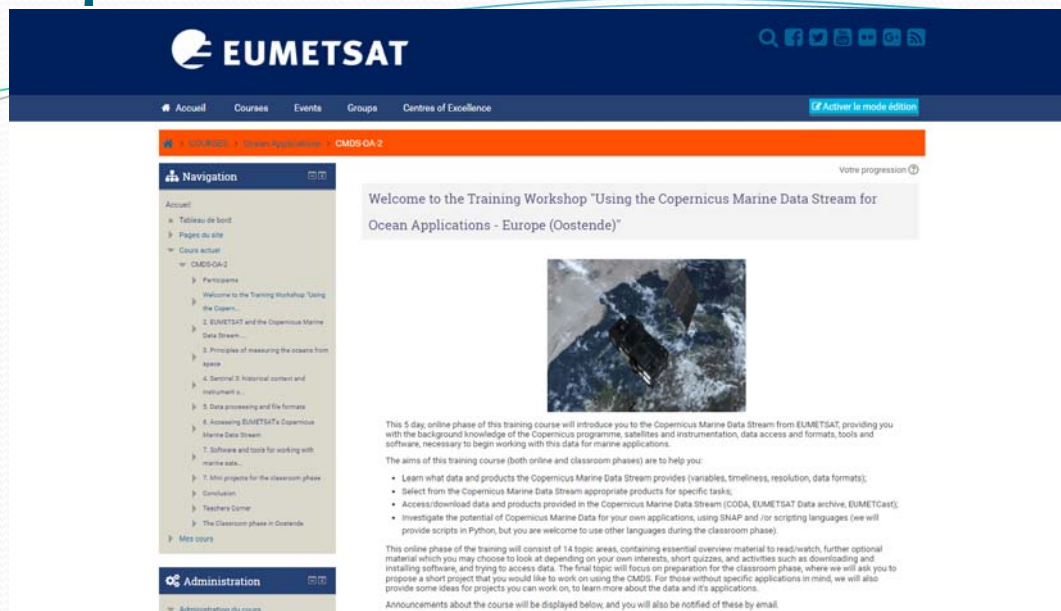




# Outreach

- Education: Ed Zaron hands-on on tides, Argonautica (Vendée Globe operation 2016-2017), Jason-3 contest
- General public: CARTHE, baydrift : involving Students, general public in understanding and monitoring currents  
(Laura Bracken from U. Miami)
- Training / university level courses: to be more advertized, promoted?

# Copernicus Marine and Ocean Training Service



User training events to be organised by EUMETSAT on behalf of the European Commission as part of the Copernicus Programme including **Copernicus Marine Data in Ocean Models and Operational Applications**.  
Online phase: 15–26 January 2018 ;face-to-face workshop: 5-9 February 2018, Hamburg, Germany.

- See <http://trainingevents.eumetsat.int/>, search for ocean

We're also looking at potential collaborative training events

- EUMETSAT
- Consortium PML /Brockmann Consult / CLS / Imperative Space
- Year: 2017-2019
- Public aimed: users
- Media: online phase + face to face
- Size / Format: 2 x 1 week
- Language(s): English, some in French





# Recommendations / perspectives

- A number of “outreach” resources (figures, maps, movies, animations, schemes... ) available
  - On the web e.g.  
[www.aviso.altimetry.fr/gallery](http://www.aviso.altimetry.fr/gallery) , [sealevel.jpl.nasa.gov/gallery/](http://sealevel.jpl.nasa.gov/gallery/)
  - On our computers / databases
- don't hesitate to ask for general material or a specific theme / figure **including for your lectures / courses**  
(at worst, we can think about having it made for future uses)
- More and more data products & services (resources) available all around  
BUT : what each of them is good for?
- ➔ Need of a user guidance about the best product for his/her use A list of products / services by applications should be built and put online (where?)

# Recommendations / perspectives

- Possibility of proposing a “demonstration” format during next OSTST, in addition to posters & orals?
  - an area with tables or some tables scattered within the session poster
  - Ideally with a screen each on the wall or at least high enough, so that it is easy to show things to more than one person, and on something bigger than a laptop screen
  - Show time during poster sessions
- This would give the opportunity of really showing interactive services (data services as well as some outreach material, or even applications)



# Recommendations / perspectives

- Continues on inviting people working at science centers / museums / aquariums or for university / research centers close to OSTST next meetings to participate in the outreach session  
Who from Azores??
- Invite somebody from Copernicus (which part of the organization? – general program or one of the core services?) to present their data & services

# OSTST on the web

- A complete overview of what was shown during this meeting, presentations & posters
- An archive of past meetings

at <http://meetings.aviso.altimetry.fr>

- UPLOAD your poster(s) in pdf (<10 MB) on <http://meetings.aviso.altimetry.fr> using the account created to submit the abstract(s).  
(you can also upload your presentation(s) too)